



murray feiss

h o m e d é c o r s p r i n g 2 0 0 9





table of contents

The Addie Collection	37
The Adeen Collection	31
The Augustine Collection	8-10
The Broderick Collection	14-15
The Candace Collection	36
The Carmelo Collection	30
The Chameleon Collection	53
The Chateau Collection	56
The Druid Hills Collection	47
The English Palace Collection	56
The Exposition Collection	50
The Gabrielle Collection	16
The Gannon Collection	6-7
The Hallie Collection	55
The Halstad Collection	54
The Jansen Collection	28-29
The Jordana Collection	34
The Kala Collection	42
The Kelham Hall Collection	12-13
The Kellenberg Collection	43
The Kinsey Collection	24-25
The Kolton Collection	27
The Kora Collection	44-46
The Lainey Collection	40-41
The Lloyd Collection	17-19
The Maddalyn Collection	2-5
The Margo Collection	11
The Myrick Collection	35
The Sonoma Valley Collection	56
The South Haven Collection	32-33
The Stelle Collection	26
The Sunset Drive Collection	20-21
The Tanner Collection	23
The Tegan Collection	22
The Tribeca Collection	48-49
The West Village Collection	52
The Whitley Collection	38-39
The Youngstown Collection	51
Finishes	57-59
Index	65
Lighting Tips	60-64
Medallions	56
Mirrors	54-55



the maddalyn collection

designed by
Wesley Glover



FL6237ANB



FL6236ANB



9749ANB



9752ANB

antique brown finish

The Maddalyn Collection is reminiscent of the 17th century renaissance. English cut, turned columns, and encased framework come together to compose these inspired and timeless pieces. Attention to detail and elaborate design creates the royal look you've always dreamed of.

9749ANB

Antique Brown Finish
Natural Textured Linen Shade
Height: 34"
Shade Diameter: 17"
Lamping: 1 - 3 Way Medium
150 Watt max.

9752ANB

Antique Brown Finish
Champagne Scavo Glass
Height: 21"
Diameter: 11"
Glass Diameter: 7"
Lamping: 1 - Candelabra
60 Watt max.
Includes: Dimmer Switch

FL6236ANB

Antique Brown Finish
Natural Textured Linen Shade
Height: 63"
Shade Diameter: 17"
Lamping: 1 - 3 Way Medium
150 Watt max.

FL6237ANB

Antique Brown Finish
Natural Textured Linen Shade
Height: 62"
Shade Diameter: 16"
Lamping: 1 - 3 Way Medium
150 Watt max.

the maddalyn collection

F2453/6+3ANB

F2452/6ANB

Antique Brown Finish
Cream Color Linen Shades
Height: 30"
Diameter: 34"
Shade Diameter: 5"
Lamping: 6 - Candelabra 60 Watt max.
Includes: 5 ft. of chain and 15ft. of wire

F2453/6+3ANB

Antique Brown Finish
Cream Color Linen Shades
Height: 37"
Diameter: 38"
Shade Diameter: 5"
Lamping: 9 - Candelabra 60 Watt max.
Includes: 5 ft. of chain and 15ft. of wire

WB1439ANB

Antique Brown Finish
Cream Color Linen Shades
Height: 17"
Width: 22"
Extension: 11"
Shade Diameter: 5"
Lamping: 3 - Candelabra 60 Watt max.



F2452/6ANB



WB1439ANB



the maddalyn collection

designed by
Wesley Glover



9750MRD

modeled red finish
antique brown finish



9751MRD

9750MRD

Modeled Red Finish
Cream Color Linen Shade
Height: 32"
Shade Diameter: 18"
Lamping: 1 - 3 Way Medium 100 Watt max.

9751MRD

Modeled Red Finish
Modeled Red Painted Shade
Height: 34"
Shade Diameter: 11"
Lamping: 1 - 3 Way Medium 150 Watt max.

the gannon collection

designed by
Wesley Glover

ebony finish scarlet finish

Graceful and classical formed silhouettes are featured in the Gannon collection. Turn spools, spindle shapes, and warm finishes in ebony and scarlet complete this assortment. Beautiful homes are lit with luminous lighting.

9763EBY

Ebony Finish
Putty Finish Shantung Shade
Height: 31"
Shade Diameter: 16"
Lamping: 1 - 3 Way Medium
150 Watt max.

9764EBY

Ebony Finish
Eggshell Textured Linen Shade
Height: 32"
Shade Diameter: 17"
Lamping: 1 - 3 Way Medium
150 Watt max.

9764SC

Scarlet Finish
Black Textured Parchment Shade
Height: 32"
Shade Diameter: 17"
Lamping: 1 - 3 Way Medium
150 Watt max.



the gannon collection

designed by
Wesley Glover

9765EBY

Ebony Finish
Eggshell Textured Linen Shade
Height: 33"
Shade Diameter: 12"
Lamping: 1 - 3 Way Medium 150 Watt max.

FL6239EBY

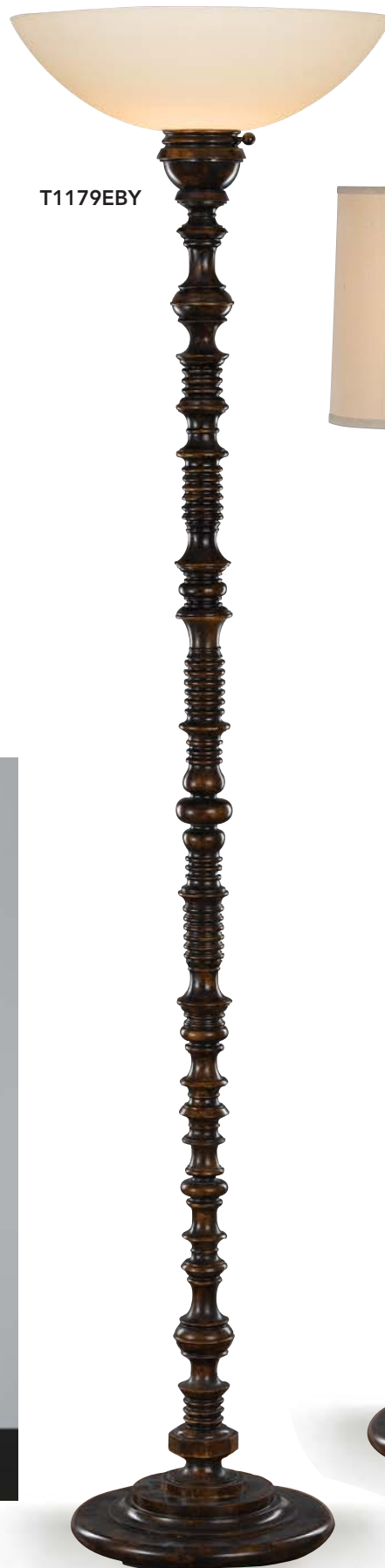
Ebony Finish
Putty Finish Shantung Shade
Height: 61"
Shade Diameter: 17"
Lamping: 1 - 3 Way Medium 150 Watt max.

T1179EBY

Ebony Finish
Cream Etched Finish Glass
Height: 74"
Shade Diameter: 18"
Lamping: 1 - 3 Way Medium 150 Watt max.



9765EBY



T1179EBY



FL6239EBY



the augustine collection

designed by
Wesley Glover

9766ANB

Antique Bronze Finish
Cream Color Textured Linen
Height: 35"
Shade Diameter: 20"
Lamping: 1 - 3 Way Medium
150 Watt max.

9768ANB

Antique Bronze Finish
Cream Color Textured Linen
Height: 39"
Shade Diameter: 12"
Lamping: 1 - 3 Way Medium
150 Watt max.

FL6243ANB

Antique Bronze Finish
Cream Color Textured Linen
Height: 67"
Shade Diameter: 20"
Lamping: 1 - 3 Way Medium
150 Watt max.

antique bronze finish

The Augustine collection is a symphony of lyrical pieces in ancient forms. Sculptured iron, champagne scavo glass, and ivory soft lined shades combine to form this orchestra. Intricate detail and beautiful embellishments with a coordinating mirror bring character to these pieces.



FL6243ANB



9768ANB



9766ANB



the augustine collection

designed by
Wesley Glover

antique brown finish
british bronze finish

9767ANB

Antique Bronze Finish
Champagne Scavo Glass
Height: 35"
Shade Diameter: 7"
Lamping: 1 - Candelabra 60 Watt max.

T1180ANB

Antique Bronze Finish
Champagne Scavo Glass
Height: 78"
Shade Diameter: 18"
Lamping: 1 - 3 Way Medium 150 Watt max.

MR1097CB

Corinthian Bronze Finish
Height: 39"
Diameter: 35"



the margo collection

designed by
Wesley Glover



9757FG

**firenze gold finish
dark walnut finish
antique silver finish**

Sculptured shapes and modern style evolve to create the Margo collection. Embossed medallions, tiger swirl sphere, and iron work become the focal point of these lamps. These pieces add just the right touch of elegance to your home.

9757FG

Firenze Gold Finish
Dark Beige Shantung Shade
Height: 33"
Shade Diameter: 16" x 11" Oval
Lamping: 1 - 3 Way Medium 150 Watt max.

9758DW

Dark Walnut Finish
White Textured Linen Shade
Height: 34"
Shade Diameter: 18" x 11" Rectangular
Lamping: 1 - 3 Way Medium 150 Watt max.

9759ASL

Antique Silver Finish
Sand Color Crepe Shade
Height: 31"
Shade Diameter: 17" x 11" Rectangular
Lamping: 1 - 3 Way Medium 150 Watt max.



9759ASL



9758DW

the kelham hall collection

designed by
Pasquale Miranda

F2422/3FG/BRB

firenze gold / british bronze finish

This Collection is what dreams are made of. Charming design, exquisite taste, and classic detail inspire this European style collection named Kelham Hall. Stunning curved arms are hand finished with delicate features. French scavo glass bloom at its opening to create a lovely glow that is pleasing to the eye and also appealing for the view.

F2418/8+4FG/BRB

Firenze Gold / British Bronze Finish
French Scavo Glass
Height: 48.25"
Diameter: 45.5"
Lamping: 12 - Candelabra 60 Watt max.
Includes: 7 ft. of chain and 20ft. of wire

F2422/3FG/BRB

Firenze Gold / British Bronze Finish
French Scavo Glass
Height: 26.75"
Diameter: 24.5"
Lamping: 4 - Medium 100 Watt max.
Includes: 5 ft. of chain and 15ft. of wire

F2418/8+4FG/BRB



the kelham hall collection

designed by
Pasquale Miranda



WB1418FG/BRB



F2417/6FG/BRB



F2421/5FG/BRB



F2419/3FG/BRB

F2417/6FG/BRB

Firenze Gold / British Bronze Finish
French Scavo Glass
Height: 33.5"
Diameter: 32"
Lamping: 6 - Candelabra 60 Watt max.
Includes: 5 ft. of chain and 15ft. of wire

F2419/3FG/BRB

Firenze Gold / British Bronze Finish
French Scavo Glass
Height: 16.75"
Diameter: 25"
Lamping: 3 - Medium 100 Watt max.
Includes: 5 ft. of chain and 15ft. of wire

F2421/5FG/BRB

Firenze Gold / British Bronze Finish
French Scavo Glass
Height: 18.5"
Diameter: 26.5"
Lamping: 5 - Medium 100 Watt max.
Includes: 5 ft. of chain and 15ft. of wire

WB1418FG/BRB

Firenze Gold / British Bronze Finish
French Scavo Glass
Height: 16.5"
Width: 5.5"
Extension: 7.75"
Lamping: 1 - Medium 100 Watt max.

the broderick collection

designed by
Wesley Glover

STUDIO LINE
M U R R A Y F E I S S

speckled taupe finish

French style urn shaped lamps suggest a traditional décor with a modern twist. Featuring speckled champagne scavo glass and shantung shades, this assortment is finished in a speckled taupe. Tall tapered columns and highlighted accents evoke an antique look that will blend beautifully with any traditional home decorative style.



T1181SPT



FL6240SPT

FL6240SPT

Speckled Taupe Finish
Putty Finish Shantung Shade
Height: 62"
Shade Diameter: 17"
Lamping: 1 - 3 Way Medium 150 Watt max.

T1181SPT

Speckled Taupe Finish
Champagne Scavo Glass
Height: 74"
Shade Diameter: 17"
Lamping: 1 - 3 Way Medium 150 Watt max.



9771SPT

9769SPT

Speckled Taupe Finish
Putty Finish Shantung Shade
Height: 24"
Shade Diameter: 14"
Lamping: 1 - 3 Way Medium 150 Watt max.

9770SPT

Speckled Taupe Finish
Putty Finish Shantung Shade
Height: 29"
Shade Diameter: 16"
Lamping: 1 - 3 Way Medium 150 Watt max.

9771SPT

Speckled Taupe Finish
Champagne Scavo Glass
Height: 35"
Shade Diameter: 7"
Lamping: 1 - Candelabra 60 Watt max.



9769SPT



9770SPT

the gabrielle collection

designed by
Wesley Glover

firenze gold finish

Intricate detail designed to impress your guests, is featured in the Gabrielle collection. Traditional and diamond patterns showcase beautifully on these lamp's silhouette. Finished in firenze gold, this grouping would be perfect for any casual setting.



9746FG

Firenze Gold Finish
Cream Color Textured Linen Shade
Height: 28"
Shade Diameter: 21"
Lamping: 1 - 3 Way Medium 150 Watt max.

9747FG

Firenze Gold Finish
Sand Color Crepe Shade
Height: 34"
Shade Diameter: 20"
Lamping: 1 - 3 Way Medium 150 Watt max.



9831MHG/GLB

9831MHG/GLB

Mahogany / Gilded Bronze Finish
Faux Silk ('Ash') Shade
Height: 35"
Diameter: 6" Square
Lamping: 1 - Medium 40 Watt max.
Includes: Dimmer Switch

9830MHG/GLB

Mahogany / Gilded Bronze Finish
Mica Shade
Height: 25"
Shade: 8" Square
Lamping: 1 - Medium 60 Watt max.
Includes: Dimmer Switch

**mahogany /
gilded bronze finish**

Lloyd counter poses a faceted wooden silhouette against a gently curving bell shade, to create a lamp that is both transitional and warmly contemporary. It comprises a genuine mica shade and a hand rubbed stained wood base. The console version is suitable alone or in pairs to frame a buffet or hearth.



9830MHG/GLB





9829MHG/GLB

mahogany /
gilded bronze finish



9832MHG/GLB

9829MHG/GLB

Mahogany / Gilded Bronze Finish
Mica Shade
Height: 34"
Shade: 19 x 14" Rectangular
Lamping: 1 - 3 Way Medium 100 Watt max.

9832MHG/GLB

Mahogany / Gilded Bronze Finish
Faux Silk ('Ash') Shade
Height: 36"
Shade Diameter: 8"
Lamping: 1 - Medium 60 Watt max.

the sunset drive collection

designed by
Pasquale Miranda

corinthian bronze finish

Textures and geometric shapes evoke an organic feel to modern forms. Cylindrical pearlescent glass shades with a hand applied striated finish combine with steel arms are a few attributes these pieces possess. Corinthian Bronze finish will combine beautifully with a natural color palette to make a subtle but powerful presence.

F2403/3CB



F2405/5CB



F2404/3CB



F2403/3CB

Corinthian Bronze Finish
Striated Pearl Glass
Height: 11"
Adj. Height: 12.75" - 60.75"
Diameter: 27"
Lamping: 3 - Medium 100 Watt max.

F2404/3CB

Corinthian Bronze Finish
Striated Pearl Glass
Height: 12"
Adj. Height: 14.5" - 68.5"
Diameter: 18.5"
Lamping: 3 - Medium 100 Watt max.

F2405/5CB

Corinthian Bronze Finish
Striated Pearl Glass
Height: 16"
Adj. Height: 25" - 72.5"
Diameter: 26.75"
Lamping: 5 - G 16 1/2 Candelabra 60 Watt max.

the sunset drive collection

designed by
Pasquale Miranda

F2406/6+3CB



F2406/6+3CB

Corinthian Bronze Finish
Striated Pearl Glass
Height: 25.5"
Adj. Height: 33.25" - 81.25"
Diameter: 32.75"
Lamping: 9 - G 16 1/2 Candelabra
60 Watt max.

MDL400CB

Ceiling Medallion
Corinthian Bronze Finish
Height: 1"
Diameter: 26"



MDL400CB

VS14901CB

Corinthian Bronze Finish
Striated Pearl Glass
Height: 10"
Width: 4.5"
Extension: 5.75"
Lamping: 1 - Medium 100 Watt max.



VS14901CB

the tegan collection

antique bronze finish
braided gold finish
gilded bronze finish

The Tegan collection is a contemporary reinterpretation of traditional lamps. The collection consists of an oval vessel in smoky topaz, a sculptural metal base in antique bronze, and a crackedled glass medallion set in a hand painted metal double frame. The rectangular shade in rich brown 'mink' faux silk completes the composition.



9821BRG



9822GLB



9820ABZ

9820ABZ

Antique Bronze Finish
Faux Silk ('mink') Shade
Height: 33"
Shade: 14 x 18"
Rectangle
Lamping: 1 - 3 Way
Medium 100 Watt max.

9821BRG

Braided Gold Finish
Faux Silk ('ash') Shade
Height: 32"
Shade: 12 x 18"
Lamping: 1 - 3 Way
Medium 150 Watt max.

9822GLB

Gilded Bronze Finish
Faux Silk ('mink') Shade
Height: 32"
Shade Diameter: 18 x 12" Oval
Lamping: 1 - 3 Way
Medium 100 Watt max.



9835GLB

9835GLB

Gilded Bronze Finish
Bamboo Imprint Art Paper Shade
Height: 31"
Shade Diameter: 16"
Lamping: 1 - 3 Way Medium 150 Watt max.

9836GLB

Gilded Bronze Finish
Bamboo Imprint Art Paper Shade
Height: 23"
Shade: 6" x 10" Rectangle
Lamping: 1 - Medium 60 Watt max.

gilded bronze finish

The Tanner table lamp creates a warm, Asian-influenced sense of balance and simplicity. The hand painted bowing metal base expresses the organic inspiration of the series, completed by the bamboo motif imprinted on the art paper shade. The lantern style lamp provides a warm geometric simplicity, suitable for rooms where a spa-like tranquility and sparseness of composition is desired. The bamboo motif shade rests on a hand painted, rectangular metal base.



9836GLB

the kinsey collection

designed by
Pasquale Miranda

F2427/6+3CB

corinthian bronze finish

Simple and lyrical in style, this collection's curves are designed to compliment a broad range of architectural styles. Whether traditional, vintage, or modern these pieces will enhance any décor. Great rooms start with great lighting.



F2423/5CB



F2423/5CB

Corinthian Bronze Finish
Polished Citrine Glass
Height: 25.5"
Diameter: 26.5"
Lamping: 5 - G 16 1/2 Candelabra
60 Watt max.
Includes: 5 ft. of chain and 15ft. of wire

F2427/6+3CB

Corinthian Bronze Finish
Polished Citrine Glass
Height: 36"
Diameter: 41.75"
Lamping: 9 - G 16 1/2 Candelabra
60 Watt max.
Includes: 7 ft. of chain and 15ft. of wire



F2425/3CB

F2424/3CB

Corinthian Bronze Finish
Polished Citrine Glass
Height: 23"
Diameter: 22"
Lamping: 3 - Medium 100 Watt max.
Includes: 5 ft. of chain and 15ft. of wire

F2425/3CB

Corinthian Bronze Finish
Polished Citrine Glass
Height: 12.375"
Adj. Height: 15" - 69"
Diameter: 25.25"
Lamping: 3 - Medium 100 Watt max.
Includes: 5 ft. of chain and 15ft. of wire
Includes: (1) 6" stem and (4) 12" stems.



WB1420CB

WB1419CB

WB1419CB

Corinthian Bronze Finish
Polished Citrine Glass
Height: 16.5"
Width: 5.5"
Extension: 7.75"
Lamping: 1 - G 16 1/2
Candelabra 60 Watt max.

F2424/3CB



WB1420CB

Corinthian Bronze Finish
Polished Citrine Glass
Height: 32.5"
Width: 9"
Extension: 10"
Lamping: 1 - G 16 1/2
Candelabra 60 Watt max.

the stelle collection

designed by
Pasquale Miranda

oil rubbed bronze finish

Innovation and creativity are what makes this piece stand out from the rest. This industrial design will capture your attention to detail. Cream linen shades and geometric shapes will have you redefining craftsmanship. We create today's designs for tomorrow's inspiration.

P1152ORB



F2400/6ORB



F2400/6ORB

Oil Rubbed Bronze Finish
Cream Linen Shade
Height: 22.5"
Adj. Height: 30.75" - 78.75"
Length: 38"
Width: 17"
Lamping: 6 - Medium 60 Watt max.

P1152ORB

Oil Rubbed Bronze Finish
Cream Linen Shade
Height: 19.75"
Adj. Height: 21.25" - 72.25"
Diameter: 24.25"
Lamping: 4 - Medium 60 Watt max.

the kolton collection

gilded bronze finish

Kolton features marble set in an overlapping course which provides depth to the surface when lit, and harkens to its Craftsman style inspiration. A hand painted metal base makes this lamp suitable for desktop use, or as an accent lamp.



FL6248GLB



9834GLB



9833GLB

9834GLB

Gilded Bronze Finish
Marble Glass
Height: 27"
Width: 9"
Shade Diameter: 5" Square
Lamping: 2 - Candelabra 40 Watt max.
Includes: Dimmer Switch at Base

9833GLB

Gilded Bronze Finish
Marble Glass
Height: 21"
Width: 8"
Shade Diameter: 5" Square
Lamping: 1 - Candelabra 40 Watt max.
Includes: Dimmer Switch at Base

FL6248GLB

Gilded Bronze Finish
Marble Glass
Height: 64"
Width: 12"
Shade Diameter: 6" Square
Lamping: 2 - Candelabra 40 Watt max.
Includes: Foot Switch

the jansen collection

designed by
Wesley Glover

aged silver leaf finish

The Jansen Collection features silver leaf geometric patterns mounted on solid marble bases.



9754AGS

9754AGS

Aged Silver Leaf Finish
Eggshell Textured Linen Shade
Height: 31" Diameter: 15"
Lamping: 1 - 3 Way Medium
150 Watt max.

9755AGS

Aged Silver Leaf Finish
Eggshell Textured Linen Shade
Height: 36" Diameter: 11"
Lamping: 1 - 3 Way Medium
150 Watt max.

9756AGS

Aged Silver Leaf Finish
Champagne Scavo Glass
Height: 20" Diameter: 10"
Shade Diameter: 6"
Lamping: 1 - Candelabra
60 Watt max.

Includes: In Line Dimmer Switch



9755AGS



9756GS

FL6238AGS

Aged Silver Leaf Finish
Eggshell Textured Linen Shade
Height: 65" Diameter: 20"
Lamping: 1 - 3 Way Medium
150 Watt max.



FL6238AGS



F2454/3AGS



WB1440AGS

9753AGS

Aged Silver Leaf Finish
Eggshell Textured Linen Shade
Height: 25"
Diameter: 20"
Lamping: 1 - 3 Way Medium 150 Watt max.
Includes: 5 ft. of chain and 15ft. of wire

F2454/3AGS

Aged Silver Leaf Finish
Eggshell Textured Linen Shade
Height: 16"
Diameter: 21"
Lamping: 3 - Candelabra 60 Watt max.

MR1098AGS

Aged Silver Leaf Finish
Height: 38"
Diameter: 38"

WB1440AGS

Aged Silver Leaf Finish
Eggshell Textured Linen Shade
Height: 21"
Width: 13"
Extension: 9"
Shade Diameter: 12"
Lamping: 3 - Candelabra 60 Watt max.



MR1098AGS



9753AGS

the carmelo collection

antique bronze finish brushed nickel finish

Antique bronze and silver on clean and classic metal silhouettes features an acid etched botanical motif. The graphic and distinctive botanical pattern is balanced by a rectangular hardback shade in 'tea' colored faux silk and in icy 'titanium' that completes this strikingly contemporary assemblage.



9827ABZ

9826ABZ

Antique Bronze Finish
Faux Silk ('Tea')
Height: 31"
Shade: 12 x 18" Rectangular
Lamping: 1 - 3 Way Medium
150 Watt max.

9827ABZ

Antique Bronze Finish
Faux Silk ('Tea')
Height: 35"
Shade: 12" Square
Lamping: 1 - 3 Way Medium
100 Watt max.

9828BN

Brushed Nickel Finish
Faux Silk ('Titanium')
Height: 32"
Shade: 12" Square
Lamping: 1 - 3 Way Medium
150 Watt max.



9826ABZ



9828BN

the adeen collection

designed by
Wesley Glover



9760GS



9762FG

firenze gold finish gilded silver finish

Finished in a palette of firenze gold and gilded silver, the Adeen collection captures an upscale look and modern feel. Stacked globes and interlocking geometric shapes complete this composition. Its stylish design adds dimension to complement your living space.



9761FG

9760GS

Gilded Silver Finish
Eggshell Shantung Shade
Height: 27"
Diameter: 17 x 11" Oval
Lamping: 1 - 3 Way Medium 150 Watt max.

9761FG

Firenze Gold Finish
Off White Taffeta Shade
Height: 37"
Diameter: 16 x 11" Oval
Lamping: 1 - 3 Way Medium 150 Watt max.

9762FG

Firenze Gold Finish
Hazelnut Taffeta Shade
Height: 33"
Diameter: 16" x 12" Oval
Lamping: 1 - 3 Way Medium 150 Watt max.

the south haven collection

designed by
Pasquale Miranda

aged brass finish

Enchant your guests with the impressive forms that create modern art and glamour in the South Haven collection. Fretwork, clean lines, and tapered curves offer a graceful balance in proportion. The light that reflects from the opal glass case embraces a warm intimate setting for everyone to enjoy.



F2410/6+2AGB

F2408/3AGB



F2407/6AGB



F2407/6AGB

Aged Brass Finish
Clear Glass
Height: 30.75"
Diameter: 13"
Lamping: 6 - Candelabra
60 Watt max.
Includes: 5 ft. of chain
and 15ft. of wire

F2408/3AGB

Aged Brass Finish
White Opal Shiny Glass Shades
Height: 25.5"
Diameter: 27"
Lamping: 3 - Medium 100 Watt max.,
2 Type C7 Candelabra 10 Watt max.
Includes: 5 ft. of chain and 15ft. of wire

F2410/6+2AGB

Aged Brass Finish
White Opal Shiny Glass Shades
Height: 27"
Diameter: 31.5"
Lamping: 6 - Medium 100 Watt max.,
2 Candelabra 25 Watt max.
Includes: 5 ft. of chain and 15ft. of wire

the south haven collection

designed by
Pasquale Miranda



F2412/3AGB



MR1096AGB



VS15502/AGB



VS15501/AGB

F2412/3AGB

Aged Brass Finish
White Opal Shiny Glass
Height: 26"
Diameter: 16.5"
Lamping: 3 - Medium 100 Watt max.
Includes: 5 ft. of chain and 15ft. of wire

VS15501/AGB

Aged Brass Finish
White Opal Shiny Glass Shade
Height: 11.5"
Width: 4.5"
Extension: 5"
Lamping: 1 - Medium 100 Watt max.

MR1096AGB

Aged Brass Finish
Height: 34"
Width: 24.5"

VS15502/AGB

Aged Brass Finish
White Opal Shiny Glass Shades
Height: 9.25"
Length: 12.75"
Extension: 5.5"
Lamping: 2 - Medium 100 Watt max.

the jordana collection

designed by
Wesley Glover

crackle finish

Lighting is a crucial element that brings balance and harmony into your home. For this reason we have created the Jordana collection. Simple shapes, ceramic finishes, and contrasting shades all come together to form a work of art. Today's styles for care free living.



9775IC

9775IC

Ivory Crackle Finish
Almond Linen Shade
Height: 29"
Shade: 19" Square
Lamping: 1 - 3 Way Medium
150 Watt max.

9776GOC

Gray Owl Crackle Finish
Eggshell Textured Linen Shade
Height: 32"
Shade Diameter: 21"
Lamping: 1 - 3 Way Medium
150 Watt max.

9777GOC

Gray Owl Crackle Finish
Eggshell Textured Linen Shade
Height: 31"
Shade Diameter: 20"
Lamping: 1 - 3 Way Medium
150 Watt max.

9778IC

Ivory Crackle Finish
Black Text Parchment Shade
Height: 36"
Shade Diameter: 20"
Lamping: 1 - 3 Way Medium
150 Watt max.



9778IC



9777GOC



9776GOC

the myrick collection

designed by
Wesley Glover

pearl glass finish

Sand color crepe and ivory soft lined shades rest beautifully over the bodice of these skillfully crafted lamps. The Myrick collection is finished in a pearlescent glass and accented with antique brass mountings. Its water vessel shapes and classic columns bring glamour and elegance to home décor.

FL6235PGL



9732PGL



9731PGL

9731PGL

Pearl Glass Finish
Sand Color Crepe Shade
Height: 30"
Shade Diameter: 18"
Lamping: 1 - 3 Way Medium 150 Watt max.

9732PGL

Pearl Glass Finish
Sand Color Crepe Shade
Height: 34"
Shade Diameter: 13"
Lamping: 1 - 3 Way Medium 150 Watt max.

FL6235PGL

Pearl Glass Finish
Sand Color Crepe Shade
Height: 63"
Shade Diameter: 18"
Lamping: 1 - 3 Way Medium 150 Watt max.

the candace collection

acadia white finish

Candace is composed of a fluted porcelain vessel tapered at the mid section by a brushed nickel ring. The collection also features an oversized contemporary ceramic vessel with an embossed, interlinking geometric pattern. The rich metallic sheen of the faux silk hardback shade completes the silhouette.



9825ACW/BN



9823ACW/BN



9824ACW/BC

9823ACW/BN

Acadia White/Brushed Nickel Finish
Faux Silk ('Titanium') Shade
Height: 33"
Shade Diameter: 17"
Lamping: 1 - 3 Way Medium 100 Watt max.

9824ACW/BC

Acadia White/Black Chrome Finish
Faux Silk (White with Black Trim) Shade
Height: 33"
Shade Diameter: 17"
Lamping: 1 - 3 Way Medium 100 Watt max.

9825ACW/BN

Acadia White/Brushed Nickel Finish
Faux Silk ('Titanium') Shade
Height: 34"
Shade Diameter: 19"
Lamping: 1 - 3 Way Medium 150 Watt max.

the addie collection

designed by
Wesley Glover



crackle finish

Decorative embossed patterns enhance the Asian look and feel of these pieces. Soft grey and almond linen shades complement shapely ceramic bases that are accented with polished nickel mountings. The Addie collection will make any home décor stylish and radiant.



9773LSC

9772CPY

Crackle Putty Finish
Grey Mauve Shantung Shade
Height: 25"
Shade Diameter: 18"
Lamping: 1 - 3 Way Medium
150 Watt max.

9773LSC

Light Sand Crackle Finish
Almond Linen Shade
Height: 30"
Shade Diameter: 19"
Lamping: 1 - 3 Way Medium
150 Watt max.

9774GOC

Gray Owl Crackle Finish
Almond Linen Shade
Height: 24"
Shade: 19" x 12" Rectangle
Lamping: 1 - 3 Way Medium
150 Watt max.

the whitley collection

designed by
Wesley Glover

white cased finish

The Whitley collection emphasizes identifiable shapes that complete any transitional room setting. Features hand blown milk glass topped off with various shades and accented with antique brass and polished nickel mountings. These lamps will bring a stylish look and opulent light to any room they inhabit.



9739WTC



9742WTC

9739WTC

White Cased Finish
Black Shantung Shade
Height: 32"
Shade Diameter: 13"
Lamping: 1 - 3 Way Medium 150 Watt max.

9742WTC

White Cased Finish
Black Textured Parchment Shade
Height: 30"
Shade Diameter: 17"
Lamping: 1 - 3 Way Medium 150 Watt max.

the whitley collection

designed by
Wesley Glover



9737WTC



9738WTC

9737WTC

White Cased Finish
Cream Color Shantung Shade
Height: 30"
Shade Diameter: 18"
Lamping: 1 - 3 Way Medium
150 Watt max.

9738WTC

White Cased Finish
Cream Color Shantung Shade
Height: 28"
Shade Diameter: 17"
Lamping: 1 - 3 Way Medium
150 Watt max.

9740WTC

White Cased Finish
Eggshell Textured Linen Shade
Height: 23"
Shade Diameter: 16"
Lamping: 1 - 3 Way Medium
150 Watt max.



9740WTC



9741WTC

9741WTC

White Cased Finish
Eggshell Textured Linen Shade
Height: 29"
Shade Diameter: 19"
Lamping: 1 - 3 Way Medium
150 Watt max.

the lainey collection

designed by
Wesley Glover

vibrant finishes

Urban, contemporary, and style come together to create the Lainey collection. Clear lucite, vibrant finishes, and a variety of shades complete the stunning look of these attractive pieces. Brilliant light will reflect throughout any room adorned with these lamps.



9735PLT

9734BKCD

Black Cased Finish
Black Parchment Textured Shade
Height: 23"
Shade Diameter: 17"
Lamping: 1 - 3 Way Medium
150 Watt max.

9734RC

Red Cased Finish
Eggshell Textured Linen Shade
Height: 23"
Shade Diameter: 17"
Lamping: 1 - 3 Way Medium
150 Watt max.

9735PLT

Pearlescent Finish
Black Parchment Textured Shade
Height: 29"
Shade Diameter: 14"
Lamping: 1 - 3 Way Medium
150 Watt max.



9734BKCD



9734RC

the lainey collection

designed by
Wesley Glover



9734SF

9734SF

Snow Flake Finish
Almond Linen Shade
Height: 23"
Shade Diameter: 17"
Lamping: 1 - 3 Way Medium
150 Watt max.

9733SMC

Smoke Cased Finish
Almond Linen Shade
Height: 30"
Shade Diameter: 17"
Lamping: 1 - 3 Way Medium
150 Watt max.

9736BLC

Blue Cased Finish
Almond Linen Shade
Height: 31"
Shade Diameter: 18"
Lamping: 1 - 3 Way Medium
150 Watt max.



9733SMC



9736BLC

the kala collection

designed by
Wesley Glover

cased finish

The Kala collection is beautiful in simplicity and stunning in design. Beige sienna and black swirls are cased in the finish and make each lamp an original piece. Black, red, and eggshell textured shades complete the look.

We offer one of a kind style to personalize each individual's home.



9744CSC

9743BLC

Blue Cased Finish
Black Textured Parchment Shade
Height: 30"
Shade Diameter: 18"
Lamping: 1 - 3 Way Medium 100 Watt
max. with Night Light

9744CSC

Cream Sienna Cased Finish
Red Shantung Shade
Height: 33"
Shade Diameter: 20"
Lamping: 1 - 3 Way Medium 100 Watt max.
with Night Light

9745BKWTC

Black White Cased Finish
Eggshell Textured Linen Shade
Height: 31"
Shade Diameter: 19"
Lamping: 1 - 3 Way Medium 100 Watt max.
with Night Light



9743BLC



9745BKWTC

the kellenberg collection

designed by
Pasquale Miranda

F2381/3BS



brushed steel finish

Streamlined, simple styling and classic details combine to create a unique collection – a modern interpretation of classic craftsman style. It will transform your living an architectural style



F2379/4BS

Brushed Steel Finish
White Opal Etched Glass
Height: 18.375"
Adj. Height: 21" - 75"
Diameter: 21"
Lamping: 4 - Medium 100 Watt max.

F2381/3BS

Brushed Steel Finish
White Opal Etched Glass Shades
Height: 20"
Adj. Height: 22.5" - 76.5"
Diameter: 24"
Lamping: 3 - Medium 100 Watt max.

F2382/4BS

Brushed Steel Finish
White Opal Etched Glass
Height: 20"
Adj. Height: 22.5 - 76.5"
Diameter: 25"
Lamping: 4 - G 16 1/2
Candelabra 60 Watt max.



F2379/4BS



the kora collection

designed by
Pasquale Miranda

F2415/6+3ORB



oil rubbed bronze finish

Ingenious craftsmanship and design aesthetic come together to create the Kora Collection. This casual modern collection is a study in simplicity. Its rich color scheme and fluidity highlight the cream finished glass shades and intersecting arched arms. The design creates balance in the fixture and will bring a new mode to your home. If your home décor is clean and simple these pieces will suit your lifestyle.

F2415/6+3ORB

Oil Rubbed Bronze Finish
Cream Etched Glass Shades
Height: 39.75"
Adj. Height: 41.25" - 92.25"
Diameter: 36"
Lamping: 9 - Candelabra 60 Watt max.
Includes: (4) 12" stems and
(1) 6" stem with 15ft of wire

P1158ORB

Oil Rubbed Bronze Finish
Cream Etched Glass
Height: 14"
Height: 15.5" - 69.5"
Diameter: 20.5"
Lamping: 4 - Medium 60 Watt max.
Includes: (4) 12" stems and
(1) 6" stem with 15ft of wire

P1158ORB



WB1416ORB

WB1416ORB

Oil Rubbed Bronze Finish
Cream Etched Glass
Height: 20.5"
Width: 5"
Extension: 5.5"
Lamping: 1 - Candelabra 60 Watt



the kora collection

designed by
Pasquale Miranda

F2413/6ORB

Oil Rubbed Bronze Finish
Cream Etched Glass Shades
Height: 28"
Adj. Height: 29.5" - 83.5"
Diameter: 27"
Lamping: 6 - Candelabra 60 Watt max.
Includes: (4) 12" stems and
(1) 6" stem with 15ft of wire

F2413/6ORB



F2414/3ORB

Oil Rubbed Bronze Finish
Cream Etched Glass
Height: 29.75"
Diameter: 25"
Lamping: 3 - Medium 100 Watt max.
Includes: 5 ft. of chain and 15ft. of wire

F2416/3ORB

Oil Rubbed Bronze Finish
Cream Etched Glass
Height: 18"
Adj. Height: 19.5 - 73.5"
Diameter: 23.5"
Lamping: 3 - Medium 100 Watt max.
Includes: (4) 12" stems and
(1) 6" stem with 15ft of wire



the druid hills collection

designed by
Pasquale Miranda



F2431/8SD



F2432/3SD



F2433/1SD

silver dust finish

Interlocking geometric shapes in a fresh multi layered finish gives this classic mid - century modern piece a warm and casual ambiance.



WB1421SD

F2431/8SD

Silver Dust Finish
Pearl Glass Shades
Height: 24.5"
Adj. Height: 26.5" - 80"
Diameter: 26.5"
Lamping: 8 - Candelabra 60 Watt max.
Includes: (4) 12" stems and
(1) 6" stem with 15ft of wire

F2432/3SD

Silver Dust Finish
Pearl Glass
Height: 24.5"
Adj. Height: 26" - 80"
Diameter: 22.5"
Lamping: 3 - Medium 100 Watt max.
Includes: (4) 12" stems and
(1) 6" stem with 15ft of wire

F2433/1SD

Silver Dust Finish
Pearl Glass
Height: 36.75"
Adj. Height: 38.5" - 92.5"
Diameter: 16"
Lamping: 1 - Medium
150 Watt max.
Includes: (4) 12" stems and
(1) 6" stem with 15ft of wire

WB1421SD

Silver Dust Finish
Pearl Glass
Height: 15.5"
Width: 5"
Extension: 7"
Lamping: 1 - Candelabra
60 Watt max.

the tribeca collection

designed by
Pasquale Miranda

HOME
SOLUTIONS
MURRAY FEISS

brushed steel finish
heritage bronze finish

Beautiful lines grace this piece with fluidity like no other. Opal etched glass shades are complemented with heritage bronze and brushed steel finishes to create luminous shine that will glow throughout any room this piece inhabits. This collection re-defines traditional lighting for today's updated homes.

F2457/3BS



F2455/5BS

Brushed Steel Finish
Opal Etched Glass Shades
Height: 19"
Adj. Height: 21.5" - 75.5"
Diameter: 25"
Lamping: 5 - Medium 100 Watt max.

F2457/3BS

Brushed Steel Finish
Opal Etched Glass Shades
Height: 21.5"
Adj. Height: 24" - 78"
Diameter: 24"
Lamping: 3 - Medium 100 Watt max.

WB1442BS

Brushed Steel Finish
Opal Etched Glass Shade
Height: 9.5"
Width: 4.5"
Extension: 5.25"
Lamping: 1 - Medium 100 Watt max.



WB1442BS

F2455/5BS



the tribeca collection

designed by
Pasquale Miranda

HOME
SOLUTIONS
MURRAY FEISS



WB1442HTBZ



F2457/3HTBZ



F2455/5HTBZ

F2455/5HTBZ

Heritage Bronze Finish
Opal Etched Glass Shades
Height: 19"
Adj. Height: 21.5" - 75.5"
Diameter: 25"
Lamping: 5 - Medium 100 Watt max.

F2457/3HTBZ

Heritage Bronze Finish
Opal Etched Glass Shades
Height: 21.5"
Adj. Height: 24" - 78"
Diameter: 24"
Lamping: 3 - Medium 100 Watt max.

WB1442HTBZ

Heritage Bronze Finish
Opal Etched Glass Shade
Height: 9.5"
Width: 4.5"
Extension: 5.25"
Lamping: 1 - Medium 100 Watt max.

the exposition collection

designed by
Deborah Shavlik



brushed steel finish

Streamlined and contemporary this collection offers a new element to design. Clean and precise lines complement smooth satin white glass that radiate opulent light throughout your living space.

FES1304/9BS



FES1303/5BS



FES1302/3BS

Brushed Steel Finish
Satin White Glass
Height: 32.75" - 56.75"
Diameter: 16"
Lamping: 3 - GU24
Compact Fluorescent 13 Watt
Includes: (3) 12" Stems,
(1) 6" stem, and 15ft. of wire



FES1304/9BS

Brushed Steel Finish
Satin White Glass
Height: 27.75" - 72"
Diameter: 30"
Lamping: 9 - GU24
Compact Fluorescent 13 Watt
Includes: (3) 12" Stems,
(1) 6" stem, and 15ft. of wire



WBES4100BS



FES1302/3BS



FES1303/5BS

Brushed Steel Finish
Satin White Glass
Height: 15" - 59.25"
Diameter: 26"
Lamping: 5 - GU24
Compact Fluorescent 13 Watt
Includes: (3) 12" Stems,
(1) 6" stem, and 15ft. of wire



WBES4100BS

Brushed Steel Finish
Off White Linen Shade
Height: 14"
Width: 6"
Extension: 4"
Lamping: 1 - GU24
Compact Fluorescent 13 Watt
ADA Compliant



the youngstown collection

designed by
Deborah Shavlik



FES1201/1HTBZ

heritage bronze finish

A Heritage Bronze finish indulges this piece to create a smooth finish and warm feel. Clear accent pieces give a hint of glamour to these simple but stylish lights. Transitional designs and functional beauty offer simplicity for everyday living.



FES1200/5HTBZ



VSES6201/HTBZ

FES1200/5HTBZ

Heritage Bronze Finish
Cream Snow Glass Shades
Height: 26"
Diameter: 28"
Lamping: 5 - GU24
Compact Fluorescent 13 Watt
Includes: 5ft. of chain and
15ft. of wire



FES1201/1HTBZ

Heritage Bronze Finish
Cream Snow Glass
Height: 26"
Diameter: 23.5"
Lamping: 1 - G10q Double
Circline Fluorescent 40 Watt
Includes: 5ft. of chain and
15ft. of wire



VSES6201/HTBZ

Heritage Bronze Finish
Cream Snow Glass Shade
Height: 10.5"
Width: 5"
Extension: 7"
Lamping: 1 - GU24
Compact Fluorescent 13 Watt



MURRAY
FEISS
HOME FASHION FOR LIFE™

the west village collection

designed by
Deborah Shavlik

mocha tan finish
firenze gold finish


The West Village collection was designed with fashion distinction in mind. Arabesque detail, linen shades and satin glass create stylish variety for any home décor.



WBES4300FG



WBES4400FG

WBES4200MTA 
Mocha Tan Finish
Natural Linen Shade
Height: 19" Width: 7"
Extension: 4"
Lamping: 1 - GU24 Compact Fluorescent 13 Watt
ADA Compliant



WBES4300FG 
Firenze Gold Finish
Cream Snow Glass
Height: 17" Width: 6"
Extension: 4"
Lamping: 1 - GU24 Compact Fluorescent 13 Watt
ADA Compliant

WBES4400FG 
Firenze Gold Finish
Off White Linen Shade
Height: 14" Width: 12"
Extension: 4"
Lamping: 2 - GU24 Compact Fluorescent 13 Watt
ADA Compliant



WBES4200MTA

chameleon collection

designed by
Pasquale Miranda



ODWB4720CB

ODWB4720CB

Corinthian Bronze Finish
Cream Snow Glass
Height: 18"
Width: 5.875"
Extension: 4"
Mount to Top: 8.5"
Lamping: 2 - Medium 60 Watt max.
ADA Compliant

ODWB4820BK

Black Finish
White Opal Etched Glass
Height: 9.5"
Width: 8.5"
Extension: 4"
Mount to Top: 5.125"
Lamping: 1 - Medium 100 Watt max.
ADA Compliant

corinthian bronze finish black finish

Cutting edge design and organic elements combine to create the Chameleon collection. These pieces have the added value of both indoor and outdoor application. It will add ambient light to a porch, draw attention to a fabulous pergola, and enhance an outdoor lifestyle with elements normally reserved for indoor lighting.



ODWB4820BK

mirrors

designed by
Pasquale Miranda



The Halstad Collection

MR1093BS

Brushed Steel Finish
Height: 30" Width: 24"



The Halstad Collection

MR1093BV

Brushed Bronze Finish
Height: 30" Width: 24"



The Halstad Collection

MR1093CH

Chrome Finish
Height: 30" Width: 24"



The South Haven Collection

See pages 32 & 33 for additional pieces

MR1096AGB

Aged Brass Finish
Height: 34" Width: 24.5"

mirrors

designed by
Pasquale Miranda & Wesley Glover

The Hallie Collection

MR1094ORB
Oil Rubbed Bronze Finish
Height: 35.5" Width: 24"



The Jansen Collection

See pages 28 & 29 for additional pieces
MR1098AGS
Aged Silver Leaf Finish
Height: 37.75" Diameter: 37.75"



The Augustine Collection

See pages 8 & 10 for additional pieces
MR1097CB
British Bronze Finish
Height: 38.75" Diameter: 34.5"

medallions

designed by
Pasquale Miranda



MDL300BRB/GIS

The English Palace Collection

MDL300BRB/GIS

British Bronze / Gold Imperial Silver Finish
Height: 2.25"
Diameter: 28"



MDL300ATS

The Sonoma Valley Collection

MDL300ATS

Aged Tortoise Shell Finish
Height: 2.25"
Diameter: 28"



MDL200MBZ

The Chateau Collection

MDL200MBZ

Mocha Bronze Finish
Height: .75"
Diameter: 29.5"



MDL400CB

The Sunset Drive Collection

See pages 20 & 21 for additional pieces

MDL400CB

Corinthian Bronze Finish
Height: 1"
Diameter: 26"



ABZ
Antique Bronze



ACW/BC
Acadia White & Black Chrome



ACW/BN
Acadia White /
Brushed Nickel



AGB
Aged Brass



AGS
Aged Silver Leaf



ANB
Antique Brown



ASL
Antique Silver Leaf



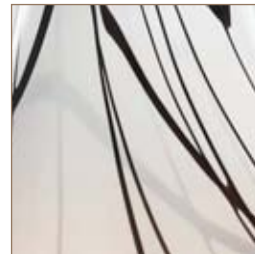
ATS
Aged Tortoise Shell



BK
Black



BKCD
Black Cased



BKWTC
Black White Cased



BLC
Blue Cased



BN
Brushed Nickel



BRB/GIS
British Bronze /
Gilded Imperial Silver



BRG
Braided Gold

the finishes



MHG/GLB
Mahogany /
Gilded Bronze



BV
Brushed Bronze



CB
Corinthian Bronze



CH
Chrome



CPY
Crackle Putty



CSC
Cream Sienna Cased



DW
Dark Walnut



EBY
Ebony



FG
Firenz Gold



FG/BRB
Firenze Gold /
British Bronze



GLB
Gilded Bronze



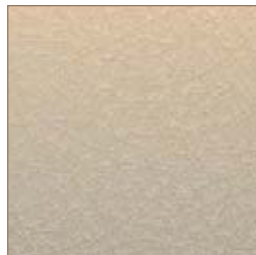
GOC
Gray Owl Crackle



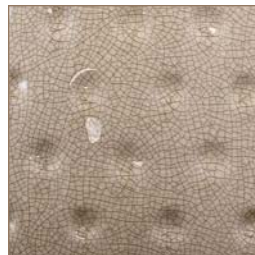
GS
Gilded Silver



HTBZ
Heritage Bronze



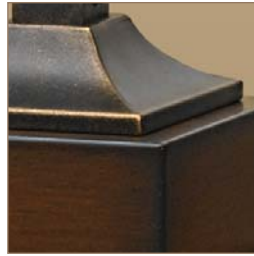
IC
Ivory Crackle



LSC
Light Sand Crackle



MBZ
Mocha Bronze



MHG/GLB
Mahogany /
Gilded Bronze



MRD
Modeled Red



MTA
Mocha Tan



ORB
Oil Rubbed Bronze



PGL
Pearl Glass



PLT
Pearlescent



RC
Red Cased



SC
Scarlet



SD
Silver Dust



SF
Snow Flakes



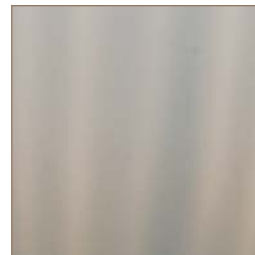
SMC
Smoked Cased



SPT
Speckled Taupe



WAL
Walnut



WTC
White Cased

Lighting Categories

Chandeliers

installed electric fixtures that hang from the ceiling.
Also known as hard wire products that are wired directly into an electrical source.

Floor Lamps

These lamps sit on the floor. They originated from an "overgrown" candle idea. A 3-way lamp gives off three levels of light, a 6-way lamp gives off six levels of light.

Torchiere

A floor standing piece topped with a glass bowl.
The bowl sits facing the ceiling as to reflect light up onto the ceiling.

Bridge Lamps

This is another floor standing lamp category. In some styles the bulb hangs down. The "bridge" portion of the lamp hangs over to offer more direct light on a person seated nearby for reading of close work.

Wall Lamps

may either be of the "pin-up" variety or they may be permanently mounted on the wall. Wall sconces, wall brackets and swing arms are all types of wall lamps.

Accent Lamps

These are generally smaller than table lamps and can sometimes have a more decorative look than table lamps.

Table Lamps

This is the most common lamp type.
Are also known as portables.

Desk Lamps

These are functional lamps; they must give off excellent light for reading.

Buffet Lamps

As their name implies these lamps are generally used on either side of a buffet table. They are sold in sets of two.

Boudoir Lamps

These are small versions of table lamps that are used on bedside tables and vanities. They are generally more feminine in character. The vanity pieces are taller than the nightstand pieces



Types of Lighting

Ambient Lighting

Illuminates the entire room. It should be moderate in level to create a warm and inviting atmosphere. High levels of lighting in a home environment should be avoided. Too much light can cause a dreary effect. The overall illumination of a room should be done with layers and various types of lighting options. A combination, of chandeliers, track or recessed lighting, wall, table and floor lamps should be used to create the desired ambient effect.

Focal or Task Lighting

This type of lighting provides functional lighting for areas where it is needed for reading, sewing, cooking, computer work, etc. This type of lighting should be cool in tone allowing the function to take place while safeguarding the eyes. Good placement of task lighting will also limit or avoid shadows or glare to further minimize eyestrain.

Accent Lighting

Illuminates and highlights interesting architectural features or objects in a room. Such items can include plants, decorative accessories, artwork, alcoves, moldings, beams, etc.

Decorative Lighting

Fixtures and lamps in this category attract attention to themselves as objects. The classic dining room chandelier or oversized two-story entryway pieces are both examples of this. Extremely decorative shades and other accents can make a lamp a decorative piece as well. A piece used for ambient, task or accent can also be decorative.

Q: How do I determine the proper size chandelier for my dining table?

A: The rule is to choose a chandelier with a diameter equal to 1/2 the width of your table. For example: if your table is 62" in diameter then choose a chandelier that is no more than 31" in diameter.

Q: How high above the table should I hang the chandelier?

A: The chandelier should be hung so that the bottom of the fixture is approximately 30" to 32" above the tabletop.

Q: How do I determine the proper size chandelier for a Foyer or another "empty" room?

A: To determine what size of a chandelier would fit best in a Foyer—or any room—simply add the room dimensions together. For example: if your foyer is 12' by 16,' add $12 + 16 = 28$. The proper size chandelier for this foyer would be 28" in diameter. If your room is 8' by 10' your maximum diameter would be 18".

Q: How do I determine the correct amount of wattage to properly illuminate a 12' by 16' room?

A: To find the proper ambient lighting for the room, multiply the room dimensions to get your total square footage ($12 \times 16 = 192$). Then multiply the total square footage by 1.5 for total illumination needed ($192 \times 1.5 = 288$ watts). So, for a 12 x 16 room, two 150-watt table or floor lamps would give more than ample light for a room this size ($2 \times 150 = 300$ watts), or an 8-light chandelier with 40-watt bulbs could create the same ambient lighting effect in a 12 x 16 room ($8 \times 40 = 320$). For example: For specific task lighting within a space, the light needed on a desk, multiply the square footage of the desk ($6 \times 3 = 18$ square feet) times 2.5 = 45 watts.

Q: What's the proper height to install wall sconces?

A: Sconces should be installed on the wall 60" from the floor. If you choose to utilize wall sconces to illuminate hallways, then the sconces should be placed eight to ten feet apart.

Q: When an item is marked with maximum wattage, is this per socket or in total?

A: Wattage is per socket. We list the maximum, lower wattage bulbs can also be used.



Q: How much wire and chain is supplied with Murray Feiss chandeliers?

A: Single tier fixtures 30" in diameter or less are packed with 5' of chain and 15' of supply wire. Fixtures with two tiers or more or having a diameter that exceeds 30" are packed with 7' of chain and 20' of supply wire.

Q: What is an Edison base bulb?

A: An Edison base bulb is a "standard" bulb.

Q: What is a 6-way Floor Lamp?

A: A 6-way floor lamp takes 4 separate bulbs – a 3-way bulb, and three single bulbs. This allows the lamp to be lit at six different light levels.

Q: Are shades in lamps interchangeable?

A: All lamps are designed with their own particular style, and size shade. You do have some flexibility with items in our price list that are sold as "lamp only". Those items can be ordered without a shade or a shade from another "lamp only" piece can be selected. Items not denoted this way are not offered as two separate pieces as they are pre-packed together in one box.

Q: Are finishes other than those shown in the catalog available on Murray Feiss items?

A: No, each item is only available in the finishes shown in our catalog.

designing with light

Home lighting is the art of painting light and shadows onto a dark canvas. The best lighting designer is a problem solver, determining where light is needed and then directing it there with economy and flair.



Four Types of Lighting

There are four basic types of lighting that are used to achieve optimal lighting design. They are ambient lighting, task lighting, accent lighting, and decorative lighting.

Ambient Lighting

the undefined areas of a room are filled with a soft level of general light, enough for someone to navigate through the room by. An ambient glow not only makes a room more inviting it also helps people in the room look their best by filling in harsh shadows created by stronger point light sources. Ambient light usually comes from indirect fixtures that provide diffuse illumination. Directional fixtures aimed at a wall or wall sconces can also produce a wash of soft light.

Task Lighting

is a bright light that illuminates a particular area where a visual activity, such as reading, sewing or food preparation takes place. Task lighting is often achieved with individual fixtures that direct a light pattern of light to a particular area or work surface. The ability to adjust task lighting is important as is shielding — hiding the bulb from direct sight. It is best to angle task lighting so that it does not cause “hot spots” or throw shadows onto the work surface. Where possible, two sources of task lighting are better than one.

Accent Lighting

is similar to task lighting in that it consists largely of directed light. Accent lighting is used to focus attention on artwork, to highlight architectural features, to help set a mood or provide drama.

Decorative Lighting

can be found in any of the three previous categories. Decorative lighting draws attention to itself, and can sometime be the centerpiece or focal point of a room. Dining rooms and two-story entryways are classic examples of very important lighting, if not the most important decorative aspect of the room.

Layering with Lighting

One basic rule of efficient lighting is to put light where you need it. However, to insure an attractive, comfortable lighting atmosphere, you must also think about balancing light. Create an effective spread of light through each room and also flowing between rooms. The best way to achieve this balance in a well-decorated room is to layer light sources.

The First Step

to lighting design is to identify the main activity areas or the room's focal point or points. Any room with multiple focal points will be the most visually interesting and balanced. This is where the brightest layer of light should be directed.

The Next Step

is a middle layer of light that provides interest in specific areas without detracting from focal points.

The Last Layer

fills in the background.

The first two layers are supplied by task and, or accent lighting, depending on what is being lit. The lower-level ambient lighting is usually indirect like that provided by wall sconces. The ratio of brightest light in the room to fill or ambient light should be 3 to 1 – at the most 5 to 1. More than this may provide drama and impact but will be uncomfortable for everyday living. Once the essential layers are in place the decorative pieces can be added. Since the essential layers of task lighting are already in place you need not rely on your decorative pieces for light — lamps with dark or black shades, or chandeliers with dimmer switches are among the lighting options that can be added with this layer. Candles would also be considered at this stage.

Avoiding Glare

One of the most important considerations in the placement of light fixtures is the glare they produce. Direct glare – as from a bare light bulb – is the worst kind. Always use the correct bulbs to avoid glare and also beware of reflected glare, light that bounces off of other objects into the eyes. Remember that light reflects off an object at the same angle as it strikes it. If the light source is at a 90° angle above the object that it strikes the glare will be reflected at 90° below the object. If the angle is too steep the light will create a “hotspot”. The safe range is between 30% and 45% from vertical. A fixture placed directly above a flat, shiny surface can produce a veiled glare. A chandelier over a dining room table can have this effect. Placing other objects on the table can minimize this effect and help deflect the glare to a comfortable level. Dimmers can also help this effect.

Mixing and matching the tricks listed below can help you highlight features, hide problems, and balance your layers of light.

Ceilings can pose problems, or they can become special features. If the ceilings seem too low, bounce light from up-light fixtures (like torchieres) as this can visually “raise” the ceilings. Cathedral or beamed ceilings can also be highlighted and take on new importance in the overall design of a room with uplighting. A common problem in older homes is rough or patchy surfaces. To deal with this and ceilings that seem too high or cavernous, keep the lighting off the ceiling by using only downlighting. Imperfections in a surface will be less noticeable without direct light shining on them.



Room dimensions can seem to be altered with the proper lighting, smaller rooms can look lighter and airier and large rooms can be warmed up with the correct lighting fixtures. Washing the four walls of a room with soft light can seem to expand a small room, when the wall is a light color this effect is enhanced. Sometimes the easiest way to accomplish this is with directed recessed lighting.

Alternately a large room illuminated with a few soft pools of light concentrated on certain objects or areas can make a room seem smaller and more intimate.

Narrow rooms can benefit by placing lighting on the short walls of the room rather than drawing attention to the long narrow walls. This results in a wider looking space.

Windows can look like black holes when not covered at night. Especially if there is no light source outside the window to help balance this effect. Opaque fixtures help minimize this effect so that only the lighted area is reflected, not the lights themselves.

Textured surfaces, be they brick, stone, or fabric can be highlighted by skimming them with light. Acute angle placement near these surfaces will help achieve this effect.

Backlighting decorative objects can help accent them. Bouncing light indirectly onto an object can also achieve a pleasant effect. Lighting something from below works particularly well on transparent or translucent items such as glass.

Entries should not be overly lit. The transition from outdoors to indoor can be disorienting. Remember to avoid glare in this area. Make the entry warm and inviting. Lighting is very important here, as it is the point where the first impression is made.

Living rooms and family rooms benefit from the layered approach perhaps more than any other areas of the home. If a television is present be sure to have soft ambient light to make the viewing experience pleasurable. These rooms are perhaps the most used rooms in a home so remember to avoid glare off of reflective surfaces. Again the television set is a prime culprit for glare.

Dining areas always have a table as their focal point – use a complimentary dining room chandelier to balance the overhead image with the table. Remember that the chandelier should not be your only light source in the room. Wall sconces, and buffet lamps are some examples of fixtures that can help balance this room. Do not forget candlelight when planning your dining area.

Hallways and stairs need ample and pleasant lighting, as they are the passageways of the home. Do not make hallways and staircases much lighter or darker than the rooms that feed into them or the transition from one to the other will be harsh. Hall lights should be kept simple, as they are generally narrower areas that can fill up and seem cluttered with overly large or ornate pieces. Do not under light these areas however, especially the staircases as this is a safety issue as well as a decorative one.

Bedrooms need the same layering of light as all other living spaces. Reading, television viewing, dressing, makeup application can all take place in the bedroom. Be sure to inquire about all activities and give enough options to have soft lighting to full bright light available in the appropriate areas of the room. Balance is also important but matching both sides of the bed is not always critical. This is often a personal space for more than one person. Each of their tastes can be reflected with complimentary, rather than matching pieces.



Workspaces must be functional but do not need to look utilitarian or cold. In other words a home office need not look like an office. Make sure to have the proper task lighting in place and again be mindful of the glare factor. Computer screens and shiny desktops can make work areas uncomfortable if glare or shadows abound. Light should come from the side not behind or in front of the worker. Again two sources are better than one to avoid eyestrain.

All these tricks used in conjunction with each other can help to achieve the overall desired effect.

Locations and activities designing with lighting

The pleasures of good lighting have an elusive quality. When you walk into a room with a successful lighting design, no one remarks on the "fantastic lighting". But you sense that everything is comfortable visually and you have the impression of being both stimulated and at ease. Lighting should not attract attention to itself in most cases but rather on the objects or areas lit. A great lighting design enhances your surroundings and all your design efforts.

Conversely, poor lighting plans will hurt otherwise excellent room designs. Not everyone will know what is "missing" or "wrong" when your lighting plan is not working- they will just know that something is not right. The best way to understand the differences great lighting can make is to see it. Start small in one small area or room. Use the tricks we have already shared with you to make a dramatic difference in one area at a time.

Quality and reliability of the products is very important. Lighting fixtures that are hard wired will stay with your room a long time. Portable lighting can be changed out more frequently as your desires change.

Murray Feiss is the perfect partner at this critical time. We are an almost 50-year old company. We only manufacture our own original copyrighted designs. We only produce goods in company-owned factories. Each and every item in our lines goes through multiple quality checks. Our packaging systems and materials far exceed the industry standards so damage is a rarity. We own a state-of-the-art distribution center allowing us to deliver your piece on time.

To aid you in your design, our merchandising concept is to introduce families of products and coordinating products which makes lighting design a simple process. We are a one source supply house for both portable and hardwire lighting. We also offer mirrors, medallions and decorative accessories.

Murray Feiss makes four product introductions per year. This means a constant flow of fresh new styles to enhance your home on your time schedule.

Before you devise a lighting plan you must first consider the variety of activities that will likely occur in the room.

Dining Tables

require a dramatic chandelier suspended directly above to enhance the beauty of your fine furnishings and tableware.



Entrance Foyers

always benefit from ceiling fixtures that emit generous spreads of light to welcome guests and assure safe passage.



Living Rooms and Family Rooms

feel cozy and inviting when table and floor lamps are used to illuminate your decor. No other light source provides the softness and comfort needed for reading, studying and general room illumination.

Hallways

should be illuminated every eight to ten feet for safety. You can accomplish this with ceiling fixtures, wall sconces or accent lamps. This will give you the general lighting you need for safety, while allowing you to accent artwork or family photos.



Bedroom Lighting

is completed with wall swingers over nightstands. These provide perfect lighting for reading while allowing essential table space for clocks, radios, books and beverages. Buffet or accent lamps add an extra dimension to a dresser or bureau as well as functional decoration.

Lamps

9731PGL	.35	9759ASL	.11
9732PGL	.35	9760GS	.31
9733SMC	.41	9761FG	.31
9734BKCD	.40	9762FG	.31
9734RC	.40	9763EBY	.6
9734SF	.41	9764EBY	.6
9735PLT	.40	9764SC	.6
9736BLC	.41	9765EBY	.7
9737WTC	.39	9766ANB	.9
9738WTC	.39	9767ANB	.10
9739WTC	.38	9768ANB	.9
9740WTC	.39	9769SPT	.15
9741WTC	.39	9770SPT	.15
9742WTC	.38	9771SPT	.15
9743BLC	.42	9772CPY	.37
9744CSC	.42	9773LSC	.37
9745BKWTC	.42	9774GOC	.37
9746FG	.16	9775IC	.34
9747FG	.16	9776GOC	.34
9749ANB	.3	9777GOC	.34
9750MRD	.5	9778IC	.34
9751MRD	.5	9820ABZ	.22
9752ANB	.3	9821BRG	.22
9753AGS	.29	9822GLB	.22
9754AGS	.28	9823ACW/BN	.36
9755AGS	.28	9824ACW/BC	.36
9756AGS	.28	9825ACW/BN	.36
9757FG	.11	9826ABZ	.30
9758DW	.11	9827ABZ	.30
		9828BN	.30

9829MHG/GLB	.19
9830MHG/GLB	.17
9831MHG/GLB	.17
9832MHG/GLB	.19
9833GLB	.27
9834GLB	.27
9835GLB	.23
9836GLB	.23

Fixtures

F2379/4BS	.48
F2381/3BS	.48
F2382/4BS	.48
F2400/6ORB	.26
F2403/3CB	.20
F2404/3CB	.20
F2405/5CB	.20
F2406/6+3CB	.21
F2407/6AGB	.32
F2408/3AGB	.32
F2410/6+2AGB	.32
F2412/3AGB	.33
F2413/6ORB	.46
F2414/3ORB	.46
F2415/6+3ORB	.45
F2416/3ORB	.46
F2417/6FG/BRB	.13
F2418/8+4FG/BRB	.12
F2419/3FG/BRB	.13
F2421/5FG/BRB	.13
F2422/3FG/BRB	.12
F2423/5CB	.24
F2424/3CB	.25
F2425/3CB	.25
F2427/6+3CB	.24
F2431/8SD	.47
F2432/3SD	.47
F2433/1SD	.47
F2452/6ANB	.4
F2453/6+3ANB	.4
F2454/3AGS	.29
F2455/5BS	.48
F2455/5HTBZ	.49
F2457/3BS	.48
F2457/3HTBZ	.49
FES1200/5HTBZ	.51
FES1201/1HTBZ	.51
FES1302/3BS	.50
FES1303/5BS	.50
FES1304/9BS	.50

Floor Lamps

FL6235PGL	.35
FL6236ANB	.3

FL6237ANB	.3
FL6238AGS	.28
FL6239EBY	.7
FL6240SPT	.14
FL6243ANB	.9
FL6248GLB	.27

Medallions

MDL200MBZ	.56
MDL300ATS	.56
MDL300BRB/GIS	.56
MDL400CB	.21, 56

Mirrors

MR1093BS	.54
MR1093BV	.54
MR1093CH	.54
MR1094ORB	.55
MR1096AGB	.33, 54
MR1097CB	.10, 55
MR1098AGS	.29, 55

Outdoor

ODWB4720CB	.53
ODWB4820BK	.53

Pendants

P1152ORB	.26
P1158ORB	.45

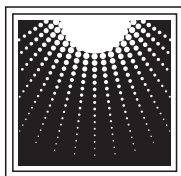
Torchieres

T1179EBY	.7
T1180ANB	.10
T1181SPT	.14

Wall Brackets

VS14901CB	.21
VS15501A/GB	.33
VS15502A/GB	.33
VSES6201/HTBZ	.51
WB1416ORB	.45
WB1418FG/BRB	.13
WB1419CB	.25
WB1420CB	.25
WB1421SD	.47
WB1439ANB	.4
WB1440AGS	.29
WB1442BS	.48
WB1442HTBZ	.49
WBES4100BS	.50
WBES4200MTA	.52
WBES4300FG	.52
WBES4400FG	.52





MURRAY
FEISS

HOME FASHION FOR LIFE®

**Murray Feiss Corporate Headquarters
& NYC Showroom**

125 Rose Feiss Boulevard
Bronx, NY 10454

phone 1.800.969.feiss (3347)

NY state: 718.292.2024

Canada: 1.800.223.8058

customer service

fax: 718.292.0083

email: customerservice@feiss.com

sales

fax: 718.292.0083

email: sales@feiss.com

showrooms

Dallas: DMC 4010

High Point: IHFC C210

Las Vegas: WMC B501

Feiss.com



**GENERATION
BRANDS™**

CM167